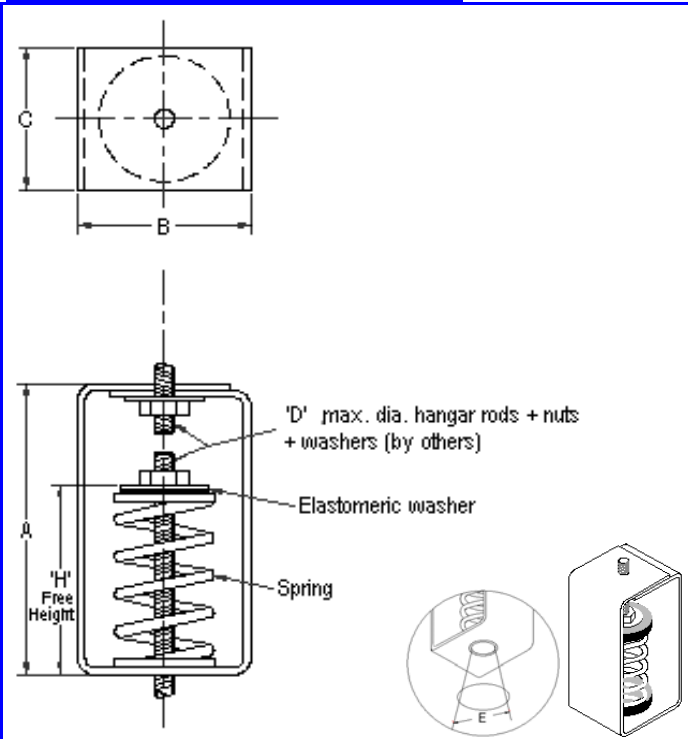


## Features + Application Information

1. Powder coated steel bracket (50-70 micron ASTM D4138-07a)
2. Load distribution steel washer
3. Nuts, washers & rods by others
4. Spring elements color-coded for easy field verification

5. Consult spring chart on page 22 for isolator performance data

## Dimensional + Model Selection Data



Hanger Series	Dimensions			
	A	B	C	D
HSS	2.72"	2.15"	1.5"	1/2"
HSF	3.47"	2.15"	1.5"	1/2"
HSA	4-1/2"	3"	2-1/4"	5/8"
HSB	7-1/2"	3"	2-3/4"	5/8"
HSD	6-3/8"	3-1/2"	2-3/4"	3/4"
HSE	8-3/4"	3-1/2"	2-3/4"	3/4"

(Refer to page 2 for isolator star rating system)

### 3/4" deflection series ★★☆☆

Model	Load Range (lbs)	H	E
HSS-021	1 to 25	1.8"	30°
HSS-022	26 to 55		
HSS-023	56 to 85		
HSS-024	86 to 125		

### 1" deflection series ★★☆☆

Model	Load Range (lbs)	H	E
HSF-041	1 to 15	2.3"	23°
HSF-042	16 to 35		
HSF-043	36 to 65		
HSF-044	66 to 90		
HSF-045	91 to 185	3-1/8"	46°
HSA-124	186 to 210		
HSA-125	211 to 300		
HSA-126	301 to 370		
HSA-127	371 to 700	4-5/8"	28°
HSB-109	701 to 750		
HSB-110	751 to 910		
HSB-111	911 to 1080		
HSB-112	1081 to 1250	4-1/8"	34°
HSD-158	1251 to 1500		
HSD-159	1501 to 2082		
HSD-159-161	2083 to 2603		n/a

### 2" deflection series ★★☆☆

Model	Load Range (lbs)	H	E
HSB-140	1 to 80	5-5/8"	28°
HSB-141	81 to 160		
HSB-142	161 to 310		
HSB-143	311 to 410		
HSB-144	411 to 595		
HSB-141-146B	596 to 647		
HSB-147	648 to 1190		
HSB-148A	1191 to 1576		
HSB-147-146B	1577 to 1690		
HSB-148A-146B	1691 to 2076		
			n/a
			28°
			n/a

### 3" deflection series ★★☆☆

Model	Load Range (lbs)	H	E
HSE-181	1 to 100	6-1/2"	30°
HSE-182	101 to 150		
HSE-183	151 to 210		
HSE-184	211 to 332		
HSE-185	333 to 580		
HSE-186	581 to 850		
HSE-187	851 to 1157		
HSE-186-199	1158 to 1470		
HSE-187-199	1471 to 1825		